

CHICAGO 2025

SHOWDAILY®

POWERED BY 75 YEARS RIMS.

OFFICIAL RISKWORLD® COVERAGE



Spencer Unites Pickleball Fans for a Worthy Cause

A Day Filled with Fun, Connections, and Fundraising

The third annual Spencer Pickleball Social, sponsored by CNA, enjoyed tremendous success, uniting passionate pickleball enthusiasts and fans from around the world for an afternoon filled with fun and light-hearted competition. The event occurred on May 3 at SPF Chicago.

The Spencer-CNA Pickleball Social welcomed players of every skill level and offered ample chances for socializing and networking, plus prizes for the top performers.

But perhaps the most important aspect of the event was the amount of money that was raised for the Spencer Educational Foundation. Thanks to the generosity of the participants and sponsors, the 2025 Pickleball Social was able to raise a total of \$39,276 for future leaders of the risk management and insurance industry.

"We are excited about the success of this year's event and thankful for the overwhelming support from the risk management community," stated Executive Director Megan Miller. "The funds raised will significantly contribute to our ability to offer vital programs and resources to future

leaders of our industry. We look forward to seeing what next year's event will bring!"

Cynthia Choi of Camden Property Trust and Bryan Jacobowitz of NARS won the tournament, along with Jacque Jaeger of At-Bay and Ryan Bullington of CNA at second place, and Pete Murphy of MMA and Kyle Smith of Ankura Consulting Group at third place.

In addition to title sponsor CNA, Spencer would like to thank the following companies for sponsoring this year's event: Arch, Alliant, Key Strategies LLC, Philadelphia Insurance Companies, Ankura, At-Bay, AXA, ICOPY Legal, NARS, Redhand Advisors, RIMS.

The Spencer Educational Foundation is a non-profit organization committed to fostering the education and professional development of risk management and insurance students. Since its establishment in 1979, the foundation has been helping students succeed by providing scholarships, grants, and internships to talented individuals pursuing careers in these fields. To learn more about the Spencer Educational Foundation and its programs, please visit www.spencer.org. ■



RIMS-CRMP®

RIMS-Certified Risk Management Professional

Take Your Career to New Heights

Gain a competitive edge with the RIMS-Certified Risk Management Professional (RIMS-CRMP) certification, an accredited competency-based credential.

What can the RIMS-CRMP do for you?

- Increase your earning potential.
- Enhance your enterprise-wide risk management perspective.
- Position you for more senior roles.
- Elevate your professional reputation.
- Demonstrate your continued competence.



[Learn more and apply.](http://RIMS.org/Certification)

RIMS.org/Certification





OLD REPUBLIC

YOU

**DESERVE A PARTNER AS
SPECIALIZED AS YOU ARE.**

Unique businesses require unique specializations.

We believe in going above and beyond for our clients. For us, that takes the form of our decentralized model which allows us to tailor coverage to best fit your business. We pride ourselves on our ability to specialize through our 18 operating companies.

oldrepublic.com

Our companies provide trusted expertise.

- BITCO INSURANCE COMPANIES
- GREAT WEST CASUALTY COMPANY
- OLD REPUBLIC ACCIDENT & HEALTH
- OLD REPUBLIC AEROSPACE
- OLD REPUBLIC CANADA
- OLD REPUBLIC CYBER
- OLD REPUBLIC EXCESS & SURPLUS
- OLD REPUBLIC HOME PROTECTION
- OLD REPUBLIC INLAND MARINE
- OLD REPUBLIC INSURED
AUTOMOTIVE SERVICES
- OLD REPUBLIC LAWYERS
SPECIALTY INSURANCE
- OLD REPUBLIC PROFESSIONAL
- OLD REPUBLIC RESIDUAL
MARKET SERVICES
- OLD REPUBLIC RISK MANAGEMENT
- OLD REPUBLIC SPECIALTY
INSURANCE UNDERWRITERS
- OLD REPUBLIC SURETY
- OLD REPUBLIC TITLE
- PMA COMPANIES

COMMERCIAL AUTO | WORKERS' COMPENSATION | PROPERTY | GENERAL LIABILITY | OTHER SPECIALTY COVERAGES

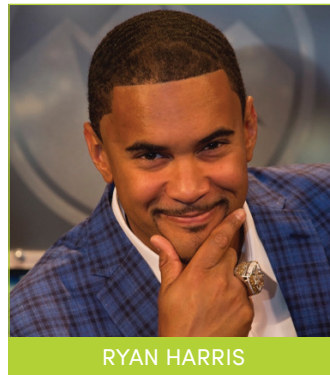
Insurance contracts are underwritten and issued by:
BITCO General Insurance Corporation, BITCO National Insurance Company, Old Republic General Insurance Corporation, Old Republic Insurance Company, Pennsylvania Manufacturers' Association Insurance Company, Manufacturers Alliance Insurance Company, Pennsylvania Manufacturers Indemnity Company, Old Republic Union Insurance Company



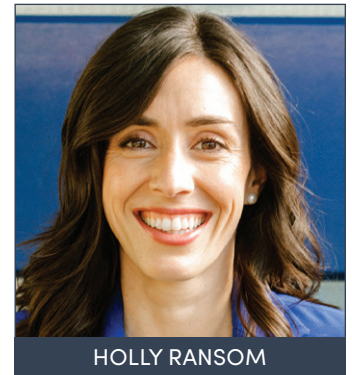
MARTHA STEWART



RACHEL DEALTO



RYAN HARRIS



HOLLY RANSOM

Embrace the Future at RISKWORLD 2025

Welcome to RISKWORLD! We're excited to have you here in Chicago. The risk management profession remains crucial given global uncertainty, technological advances, economic volatility, constant regulatory changes, supply chain issues, social risks, and more. Risk professionals must anticipate and mitigate myriad risks, be strong communicators, have a global perspective, think strategically, and much more. Over the next three days, explore the education sessions, networking opportunities, and solutions you need to prepare your organization for the future.

RISKWORLD offers a range of opportunities to elevate your risk program and career. How will you improve your professional and personal development? Here are some ways you can start:

Kickoff your RISKWORLD experience with an engaging keynote from Martha Stewart on the Main Stage, Monday from 1:15 pm–2:30 pm. Martha Stewart is the founder of the first multi-channel lifestyle company, Martha Stewart Living Omnimedia, an entrepreneur, Emmy-award winning television show host, and has just published her 101st book.

Hear unique perspectives on leadership from three TED-talk speakers on Tuesday, 1:15 pm–2:30 pm. Communication expert Rachel De Alto will speak on the "Power of Relatability," Super Bowl Champion Ryan Harris will tell us "How to Lead to Win," and Emergent Global CEO Holly Ransom will explain "Humanizing Leadership in a Tech-Enhanced World."

Get an industry outlook from Evan G. Greenberg, chairman and CEO of Chubb Limited and Chubb Group, on Tuesday, 4:00 pm–5:00 pm. Hear his insights on the future of risk management and insurance.

Visit the RISKWORLD Marketplace to find providers and products that will help you generate solutions for your organization. There are over 280 exhibitors for you to choose from in 77 categories such as agents/brokers, computer software, disability management, enterprise risk management, financial services, litigation/legal services, workers' compensation, and more.

Attend exclusive marketplace hours, breakfasts, and luncheons in the exhibit hall. Build connections and exchange business cards with your peers over some of Chicago's best cuisine. You might just meet your future colleague or business partner.

Check out a session at the DEI Studio, sponsored by Tyson & Mendes and Amwins. Great results are born out of collaboration; let's make sure that everyone is included. Attend a workshop to increase your cultural knowledge and sensitivity. Sessions include *Belonging Builds Tomorrow: A Dive In Festival Preview*; *All Brains Welcome: Neurodivergence in the Workplace*; and *The Supreme Court Impact on the Future of DEI Programs*.

On Wednesday, 10:00 am–11:15 am, learn how you can leverage interconnected insights to identify and quantify risk with the insights of keynote speaker Keith Berry, Head of Corporate and Government, Moody's. You will also hear from industry leaders in a fireside chat, bringing their experiences of these risks to life.

Don't miss the highly interactive conference finale on Wednesday, 3:00 pm–4:00 pm. Featuring The Second City Works, a world-renown improv and sketch comedy theater, this might be the most fun you've ever had at a conference. Their alumni include legends like Tina Fey, Amy Poehler, and Bill Murray. ■



EVAN G. GREENBERG



KEITH BERRY



THE SECOND CITY WORKS

From burst pipes to building
fires to natural disasters



SIP HAPPENS!

And when it causes major property damage,
it's ok to wine.

STOP BY BOOTH 1379

to enter to win a bottle of Silver
Oak and learn more about our
property damage restoration and
general contracting services.

commercialrestoration.com

CRC | COMMERCIAL
RESTORATION
COMPANY

Create Hygiene Kits with A Safe Haven

Sponsored by **ESIS**
A Chubb Company

May 5 | 9:30 am–5:00 pm

May 6 | 9:30 am–4:00 pm

Location:

**McCormick Place – West Building, Level 3,
Opposite the RISKWORLD Marketplace**

A Safe Haven is a place where people in crisis can find the food, shelter, treatment, medical care, education, job training, and job placement they need under one roof.

You'll create hygiene kits that will be distributed to the men, women, and children residing at A Safe Haven's main facility in North Lawndale.

The kits include essential hygiene items such as toothbrushes/ toothpaste, shampoo, deodorant, and other essentials. ■



RISKWORLD Snapshots



Get Social at RISKWORLD 2025

At RISKWORLD 2025, attendees, exhibitors, staff, and industry press will be posting a play-by-play of conference events and activities on social media. Get in on the action and interact with your fellow attendees. Share your photos/experiences and ask questions—we want to hear from you.

Social media sponsor Alliant will also be reporting throughout the conference. Look for their posts on the live social media feed in the Marketplace and on screens throughout McCormick Place – West Building.

In addition, don't forget to download the RISKWORLD 2025 Mobile App to keep up with the latest news and information. Simply download the RIMS Events app and enter the email you used to register for the conference; your password is your badge ID. WTW | Willis is the gold sponsor; Alliant is the silver sponsor. ■



Follow @RIMSorg on X and join the conversation using #RISKWORLD



Like @RIMSorg on Facebook and check regularly for event updates and recaps



Post your conference photos on Instagram and tag them #RISKWORLD

Risk Engineering for What's Ahead

Fire Protection Engineering

Natural Hazard Analysis

Electrical Protection Services

Jurisdictional Boiler & Pressure
Vessel Inspections

Boiler & Machinery Engineering

Infrared Thermographic Surveys

Insurance Asset Valuation

Fire Protection Code Compliance

Visit booth
425

Resilience isn't built overnight. It's built with us.

For 65 years, Global Risk Consultants (GRC) has provided data-driven risk engineering that keeps businesses running smoothly, lowers insurance costs and improves resilience.



**Global Risk
Consultants®**

Fostering Inclusivity and Belonging at RISKWORLD

by Cherise Papadopolu, Vice President of DEI, People, and Culture

RIMS remains steadfast in its commitment to building a dynamic professional community that is welcoming, inclusive, and that fosters belonging. Recognizing the profound impact that each risk professional has on organizational growth and success, the world-renowned conference will feature comprehensive education, resources, and networking opportunities to showcase the unique perspectives held by the global risk community.

RISKWORLD will include a selection of programs and sessions that will provide a platform for critical dialogue, idea exchange, and relationship building that empowers risk professionals from all walks of life:

DEI After Dark: An Inclusive Networking Celebration

Let's celebrate and strengthen our commitment to diversity, equity, and inclusion at DEI After Dark! Join us to create an environment where everyone—all backgrounds, abilities, and experiences—feels valued and heard. Proceeds from this ticketed event will benefit future DEI programs and initiatives.

The celebration is co-hosted by the National African American Insurance Association (NAAIA), the Asian American Insurance Network (AAIN), the Latin American Association of Insurance Agencies (LAAIA), Rainbow Risk Alliance, Insure Equality, and the Association of Professional Insurance Women (APIW). It is sponsored by Tyson & Mendes; Amwins; and RIMS, the foundation for risk management. Tuesday, May 6, 9:00 pm–11:30 pm. Tickets are \$75. Limited tickets available.

RIMS DEI Studio

Located at booth #737 in the Marketplace, the DEI Studio is a dynamic space fostering connection, learning, and idea exchange featuring:

- **Community Meetups:** A selection of networking sessions that bring together all communities in a safe, inclusive environment. Led by industry leaders from African American, Asian American and Pacific Islander, Latinx, and LGBTQ+ communities, these Meetups encourage attendees to share their experiences and build valuable connections. Allies are warmly invited to join the conversations held in the DEI Studio.
- **Connecting and Exchanging Ideas:** The DEI Studio will feature educational sessions addressing diversity, equity, inclusion, and accessibility issues in the risk management profession. By attending, the audience will gain insight into how industry experts are addressing these challenges in real-time at their organizations.

Wordly

Wordly is AI software that makes RISKWORLD even more welcoming. Wordly provides closed captioning in over 60 languages. Accessible on your personal device, this service will be available for all general and education sessions, ensuring a more inclusive experience for all attendees.

Accessibility

RIMS is committed to ensuring a fully accessible and inclusive experience for all participants. To support this commitment, RIMS

provides accommodations and services that will be available throughout RISKWORLD. For a list of all of RISKWORLD accessibility efforts, visit www.RIMS.org/RW25accessibility.

In addition to the DEI-focused learning and networking experiences at RISKWORLD, throughout the year, RIMS delivers a selection of webinars, articles, reports, podcasts, and more for risk professionals to learn and accelerate DEI within their organizations. To learn more about RIMS DEI efforts, visit www.RIMS.org/DEI. ■

RISKWORLD DEI Studio Schedule

Monday

9:30 am–10:15 am | Partnerships with Purpose: Leveraging Affinity Groups to Shape the Future of the Risk & Insurance Industry

10:25 am–11:10 am | African American Community Meetup

11:30 am–12:00 pm | The Power of ERGs and Multicultural Partnerships to Strengthen Company Culture

12:35 pm–1:20 pm | Belonging Builds Tomorrow: A Dive In Festival Preview

2:10 pm–2:40 pm | How to Effectively Use AI in Fair Hiring Practices

2:50 pm–3:50 pm | High Stakes and Shifting Tides: Strategies for Risk Professionals in Today's Litigious Environment

4:00 pm–5:00 pm | LGBTQ+ Professionals Community Meetup

Tuesday

9:30 am–10:15 am | Proceeding with Caution: Advancing Diversity, Equity, Inclusion, and Belonging in the Insurance Industry for the Greater Good

10:25 am–11:10 am | Women in Insurance Community Meetup

11:30 am–12:00 pm | Embracing DEI: Strengthening Our P&C Insurance Ecosystem

12:10 pm–1:10 pm | All Brains Welcome: Neurodivergence in the Workplace

1:20 pm–1:50 pm | Navigating Diversity, Equity, and Inclusion in Directors and Officers Underwriting

2:00 pm–2:30 pm | Today's Risk, Tomorrow's Talent: Building a Diverse RMI Talent Pipeline

2:40 pm–3:25 pm | Asian American and Pacific Islander Community Meetup

3:30 pm–4:00 pm | DEI Practitioners Community Meetup

Wednesday

9:30 am–10:15 am | Shaping Your Future with Creativity and Innovation

11:00 am–11:30 am | Driving DEIA: Strategies for Building Inclusive International Organizations

11:40 am–12:10 pm | Latinx Professionals Community Meetup

12:30 pm–1:00 pm | The Supreme Court Impact on the Future of DEI Programs

The New Standard in Risk Advisory and Crisis Response.

MERRILL HERZOG

Active Assailant | Extortive Crimes | Evacuations | Security



RISKWORLD Marketplace

The Marketplace features nearly 300 exhibitors and thousands of risk professionals traveling from booth to booth. It's an overwhelming experience even for the veteran RISKWORLD attendee. What booths should you visit? In addition to visiting booths related to your organization's industry or needs, we recommend checking out these booths:

Thought Leader Stage (Booth #491)

RIMS Thought Leader Stage, sponsored by Swiss Re Corporate Solutions, hosts 20-minute interactive discussions on topics such as innovation, career, parametric insurance, wildfires, ESG, claims, workers compensation, and more.

Innovation Stage (Booth #1291)

Visit the Innovation Stage, sponsored by The Hartford, for an educational experience that features exciting 20-minute presentations on developments in emerging risks, claims, and cyber risks.

DEI Studio (Booth #737)

Engage, share your experiences, and build connections in the DEI Studio, sponsored by Tyson & Mendes and Amwins. Hear discussions from leaders in the African American, Asian American, Latinx, and LGBTQ+ communities. Attend sessions that dive deep into the true issues facing diversity, equity and inclusion in the risk profession today.

RIMS HQ (Booth #825)

Be sure to visit us at RIMS HQ, your go-to place for learning and building valuable connections with RIMS members and the larger risk community. Here are resources you should take advantage of at RIMS HQ:

Global Stage

Network with attendees from all over the world and strengthen your international risk management perspective at the Global Stage, sponsored by Hylant. Attend sessions such as *The Hidden Risks of Labor Exploitation Are Closer to Home Than You Might Imagine*; *Leveraging AI to Prevent Supply Chain Risk on a Global Scale*; and *Top Geopolitical Risk Scenarios for 2025*.

Wellness ZENTER

Visit the Wellness ZENTER, sponsored by Sedgwick, to achieve zen and stay focused throughout your RISKWORLD experience. Sedgwick experts and industry leaders will discuss how you can take the next steps toward health and productivity in the workplace—from corporate wellness to whole health, consumer engagement, and work/health relationships. You can also connect and recharge with help from therapy animals.

Stop by RIMS HQ to say hello and grab some giveaways—we can't wait to see you! ■

Session Spotlight

Secondary Perils, Primary Concern: How Risk Managers Can Prepare for the \$100 Billion Storm Era

Hurricanes may dominate headlines, but secondary perils—such as severe convective storms, hail, and tornadoes—are quietly becoming a leading cause of insured losses around the world.

Since 2000, secondary perils have accounted for an estimated \$1.39 trillion in insured losses, significantly outpacing the \$990 billion caused by traditional primary perils like tropical cyclones and earthquakes, according to Aon. And the gap continues to widen. In 2024, severe convective storms alone were responsible for 41% of global insured losses, totaling \$64 billion, according to Gallagher Re. That's more than the insured losses from major hurricanes like Helene and Milton combined.

Even more telling: four severe convective storm events ranked among the 10 costliest disasters of the year. Plus, in 2023, hail two inches or larger struck the U.S. on 141 separate days—the highest annual count in two decades, according to CoreLogic.

For risk managers and insurance professionals, these trends raise a critical question: how can businesses adapt to the rising tide of secondary peril risk?

Find out on May 5 at 4:00 pm in Room W178A during the session *From Severe Convective Storms to Hail: How Secondary Perils Are Driving \$100 Billion Storm Seasons*, featuring Penni Chambers, VP of Risk Management at Hillwood, and Greg Lanshe, Risk Consultant at Global Risk Consultants.

The session will explore:

- The growing financial impact of secondary perils on the commercial property insurance market.
- Engineered and cost-effective strategies to reduce facility vulnerability.
- Real-world insights into how secondary peril risks affect insurance placement decisions.

Lanshe will discuss high-level engineered approaches to facility protection—alongside what he calls the “box-of-screws” method: simple, low-cost measures like securing rooftop equipment, fastening loose exterior materials, and regularly inspecting roofs and gutters. Often overlooked, these actions can significantly reduce loss potential.

While Chambers will add lessons learned from managing secondary peril exposure across complex real estate portfolios—and offer actionable ways to communicate risk to the C-suite. She'll address how showing the ROI of proactive risk mitigation can unlock leadership buy-in, improve underwriting outcomes, and even help companies take advantage of potential tax incentives.

In a world where “secondary” no longer means “minor,” this session will equip you with the strategies to stay one step ahead. ■

RISKWORLD Snapshots



RISKWORLD Participants Tee Off to Boost RMI Education Golfing with Spencer for a Good Cause

Over 100 RISKWORLD attendees began their conference journey on the golf course at the 2025 Spencer Golf Tournament, sponsored by Gallagher, held on Sunday, May 4th, at the Harborside International Golf Center in Chicago, IL. This annual event raised over \$110,000 for the Spencer Educational Foundation, the leading organization dedicated to supporting education in risk management and insurance.

Executive Director Megan Miller expressed, "We deeply appreciate Gallagher's 32 years of support for our golf tournament, as well as all our sponsors and players. The proceeds from this event benefit students, foster connections, and can change lives on the course. You never know where the next handshake or putt might lead your career!"

More than 110 people representing 37 companies participated in a fantastic day of golf and refreshments at Sunday's Spencer-Gallagher Golf Tournament. Winning the tournament was the foursome of Bill Baker and Kyle Thompson of Gallagher, Katie Crowe of GE Vernova, and Danny Ludwig.

Winning longest drive for the women and men were Julie Barbaro of Zurich and Trevor Smith of Gallagher, respectively. The closest to the pin for women and men were captured by Emily Buckley of Specialized Bicycle Components and Mike Weaver of Kroll, respectively.

In addition to title sponsor Gallagher, Spencer would like to thank the following companies for sponsoring this year's tournament: ServPro, RIMS, Liberty Mutual, AXA XL, Markel, Safety Source, Relation, CNA, Arch, Beazley, and Zurich.

The Spencer Educational Foundation is a non-profit organization committed to fostering the education and professional development

of risk management and insurance students. Since its establishment in 1979, the foundation has been helping students succeed by providing scholarships, grants, and internships to talented individuals pursuing careers in these fields. To learn more about the Spencer Educational Foundation and its programs, please visit www.spencered.org. ■



TUESDAY PREVIEW

Don't miss these must-attend events tomorrow, May 6!

Spencer-Sedgwick 5K Fun Run

6:30 am–8:30 am | Chicago Harbor, Lake Michigan

\$150 per runner

Sponsored by Sedgwick

Join us on the beautiful shores of Lake Michigan for a run that combines fitness, fun, and the opportunity to network while supporting the next generation of RMI professionals. On-site registration available. ■

Exclusive Marketplace Hours

9:00 am–9:30 am | Level 3, Hall F

Start your day with coffee and donuts in the Marketplace. ■

RISKWORLD Community Service: A Safe Haven

9:30 am–4:00 pm | Level 3, Opposite the RISKWORLD

Marketplace

Sponsored by ESIS, A Chubb Company

Create hygiene kits for the men, women, and children residing at A Safe Haven's main facility in North Lawndale. ■

Exclusive Marketplace Hours

12:00 pm–1:00 pm | Level 3, Hall F

Fuel up for the second half of your day with a light lunch in the Marketplace. ■

Main Stage Keynote

Triple Vision: Leadership Insights—3 TED Talks by Rachel DeAlto, Ryan Harris & Holly Ransom

1:15 pm–2:30 pm (This event will open 15 minutes prior to start time.)

Level 3, Skyline Ballroom

Three keynotes explain how you can foster a more human-centric approach to navigate the complexities of modern work environments while enhancing your leadership impact and organizational culture. ■

Main Stage Keynote

A Fireside Chat with Chubb Chairman & CEO Evan Greenberg

4:00 pm–5:00 pm (This event will open 15 minutes prior to start time.)

Level 3, Skyline Ballroom | *Sponsored by Chubb*

Evan G. Greenberg, Chairman and CEO of Chubb Limited and Chubb Group, provides an industry outlook. ■

Chicago Sights & Eats: Chinatown

by Shauntay Jones

Chicago's Chinatown is a vibrant neighborhood full of culture, flavor, and charm. Just a short walk from the convention center, you can stroll past colorful murals, savor authentic Chinese dishes, and explore unique shops and tranquil parks. Visit one of Chicago's most iconic neighborhoods.



CHINATOWN SQUARE PLAZA

2133 S China Pl | 312.808.1745

Get a glimpse of Chinese heritage at Chinatown Square Plaza, a two-story outdoor mall that features traditional architecture. With over 40 shops and restaurants, it's a great spot to find unique goods, try new foods, and check out public art like the 12 Chinese zodiac animal sculptures. ■



NINE DRAGON WALL

170 W Cermak Rd

choosechicago.com/listing/the-nine-dragon-wall

The Nine Dragon Wall is a stunning replica of the famed wall in Beijing's Beihai Park, showcasing nine vibrant dragons and over 500 smaller ones in red, gold, and blue. Constructed in 2003, this intricate mural symbolizes power and good fortune in Chinese culture. Being one of three replicas outside of China makes this a must-see attraction. ■



QING XIANG YUAN DUMPLINGS

2002 S Wentworth Ave #103 | 312.799.1118

Qing Xiang Yuan Dumplings (QXY) is a dumpling lover's dream. Known for its handmade Chinese dumplings with juicy, flavorful fillings, QXY offers standout options like pork and cabbage or lamb and coriander, served steamed, boiled, or fried. With tasty sides, a casual vibe, and authentic flavors, it's a go-to spot for a delicious and satisfying meal. ■



JOY YEE NOODLE AND PAN ASIAN CUISINE

2139 South China Place | joyyee.com | 312.328.0001

Joy Yee Noodle is a fun, casual spot known for its wide-ranging Pan-Asian menu and fresh fruit smoothies. Favorites include Korean short ribs garlic noodle, sweet and sour chicken, and garlic tofu with mixed vegetables, all served in generous portions. With a lively vibe and something for everyone, it's a great place to enjoy bold flavors and refreshing drinks. ■

RIMS Advocacy:

2025 Legislative Priorities and Related RISKWORLD Events

by Joshua Salter, RIMS-CRMP, ARM

The evolution and unpredictability of risks have significantly impacted risk professionals' ability to keep businesses operational and resilient. Adding to that challenge is a constantly changing legislative landscape that, too frequently, lags behind today's biggest risks and lacks input from risk leaders.

Every year, the volunteers who serve on the RIMS Public Policy Committee take action to fix that. The Committee is charged with identifying key legislation that impacts the risk and insurance community, as well as finding opportunities to educate lawmakers and congressional leaders to ensure they consider risk professionals' perspectives.

RIMS Public Policy Committee has identified the following as legislative priorities for 2025:

Association Tax Reform: It is expected that the new administration will prioritize tax reforms that could include seeking tax revenue from tax-exempt organizations. With some calling for a 21% corporate tax rate on all net, non-donation income, RIMS has joined the Steering Committee of ASAE's Community Impact Coalition to protect the nonprofit community and educate Congress on the societal benefits of the tax-exempt sector.

Third-Party Litigation Funding: It is well-documented that nuclear verdicts continue to have a detrimental impact on businesses nationwide, and for some organizations legal risk has jumped to the top of its risk register. Third-party litigation funding allows outside parties to provide financial support to a plaintiff in a lawsuit in exchange for a share of the settlement or judgment. RIMS is calling for more transparency regarding such funding, and for Congressional leaders to act against foreign third-party entities from financially backing civil litigation.

Freedom to Invest in Tomorrow's Workforce Act: Last Congress, RIMS participated in a coalition that supported the bipartisan, bicameral Freedom to Invest in Tomorrow's Workforce Act (S. 722 / H.R. 1477), which would expand qualified expenses under 529 savings plans to include postsecondary training and credentialing, such as licenses and professional certifications. The bill would provide valuable tax-advantaged resources for families, students and workers—with or without a college degree—who pursue career growth, mid-career changes, or pathways that diverge from a typical academic route. RIMS anticipates that the House and Senate will consider similar versions of these bills in 2025 and will actively

participate in lobbying efforts in support of them.

National Flood Insurance Program enhancements: RIMS will continue to call for the reauthorization of a long-term National Flood Insurance Program (NFIP). The program is the primary source of flood insurance coverage for residential properties in the U.S. The NFIP encourages private insurance companies to remain in the flood insurance market, helps property owners and developers to better protect assets, and includes provisions to fund flood zone mapping and building code standards updates.

At RISKWORLD, join a panel of experts including RISK PAC Trustee Penni Chambers, vice president of risk management at Hillwood, a Perot Company, as they dive deep into the Third-Party Litigation Funding industry. The session is scheduled for Wednesday, May 7 at 1:45 pm in Room W179A.

On May 7 at 8:00 am CDT, RISK PAC will host a fundraising breakfast at RISKWORLD to honor RIMS former presidents. The event is open to RISK PAC contributors. All U.S. RIMS members are eligible to donate to RISK PAC. To learn more about RISK PAC or to donate, visit www.riskpac.org.

To learn more about RIMS legislative priorities, visit www.RIMS.org/Advocacy. ■



RISKWORLD Snapshots

